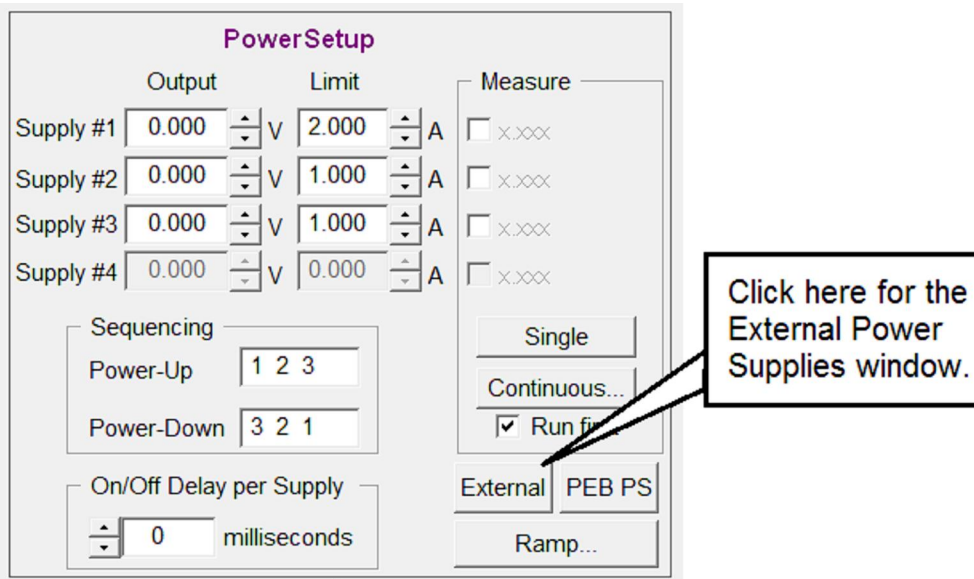


Q: Does Symphony support external power supplies?

GPIB Power Supplies

Sometimes the internal DUT power supplies in your tester are just not enough. Maybe you need more current or voltage, or simply more supplies in sheer numbers. To that end, Hilevel has built in software that will allow you to control certain external supplies over GPIB. You access the window from the Main Setup window under "Power Setup":

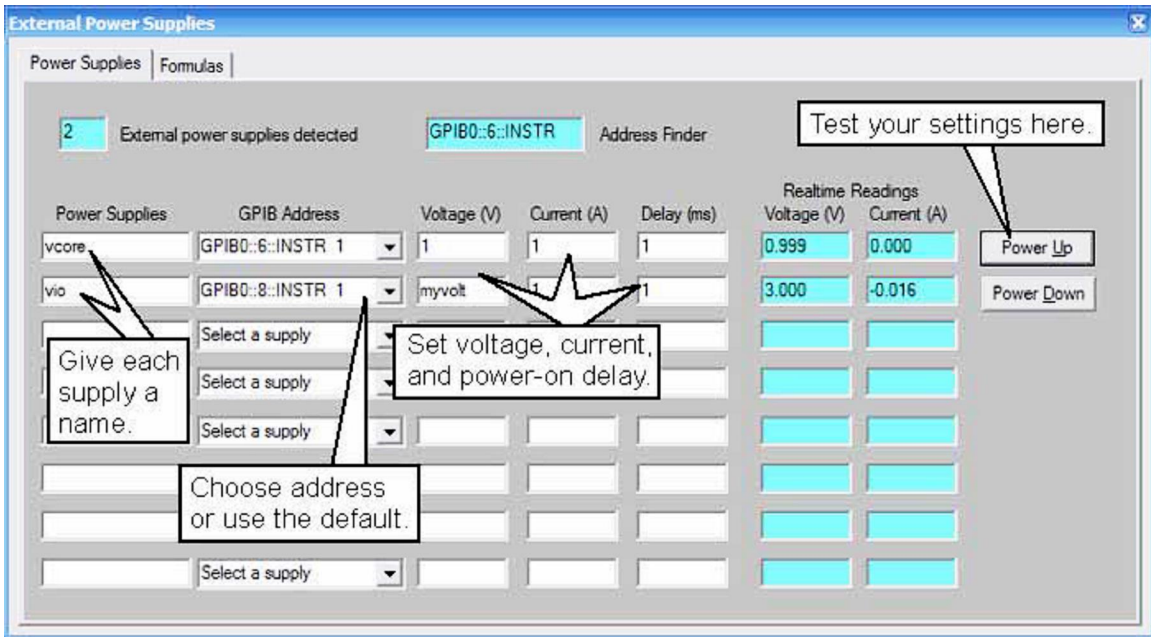


To use this feature you need the National Instruments GPIB board installed in the controlling computer, and you need to have the GPIB drivers installed (free from National Instruments at <http://www.ni.com/downloads/ni-drivers/>).

The external supplies currently supported by Hilevel are:

- HP6624A - Agilent (formerly HP)
- 6641A- Agilent
- 6651A- Agilent
- 6671A- Agilent
- AT8000B - ELGAR
- N6700B- Agilent
- N6702B- Agilent

The External Power Supply window appears on the next page. See the Symphony User Manual Section 6.



External DUT Power Supplies Window