

Q: Can I eliminate the vector “path” association in SET files?

Saving Vectors Without Path

Many users find it advantageous (even crucial at times) to make SET and TRN files portable between folders. Presently, when a SET file is saved and a vector file is associated with it, the vector file (.TRN) must be located in the same path as when the two files were created. There is a way to save all files that you create from now on so that this pathing restriction is avoided, and you can also resave SET files you've already created and eliminate the path previously stipulated. That is, the vectors can be saved without a path so that the “Download Vectors” window that appears when opening the setfile looks only in the current folder for the vectors. (The same is true for PRG files, by the way) This requires a *special script* to be enabled. We'll tell you how to do that in a moment, but first let's talk about managing your Special Script file in general.

You may recall that Special Script is a way that users can enable certain features in the tester that have not yet been incorporated into the released software. The file “SpScript.txt” presently in your C:\Symphony folder contains scripts (unreleased features) that you are currently using. Actually, it probably lists *all* the scripts and simply enables certain ones by the absence of the leading semicolon at column zero. Open this file and look at it. (In Symphony, just open “View” and “Preferences” for the special scripts file.)

```
.  
. .  
. .  
;NEW FEATURES (Recommended)  
;AllowNewBetaFeatures; Generic  
;SaveVectorFileWithoutPathIfPathMatchesSetFilePath  
DisplayLimitIfDcPmuLimitExceeded  
AllowIddqScreen  
;AutoTestUsePmuPer32  
. .  
. .  
. .
```

SpScript.txt Partial Example

Every time you start the Symphony software, it looks for *SpScript.txt* in the Symphony folder. All enabled keywords in *SpScript.txt* are activated unless you rename the file and restart.

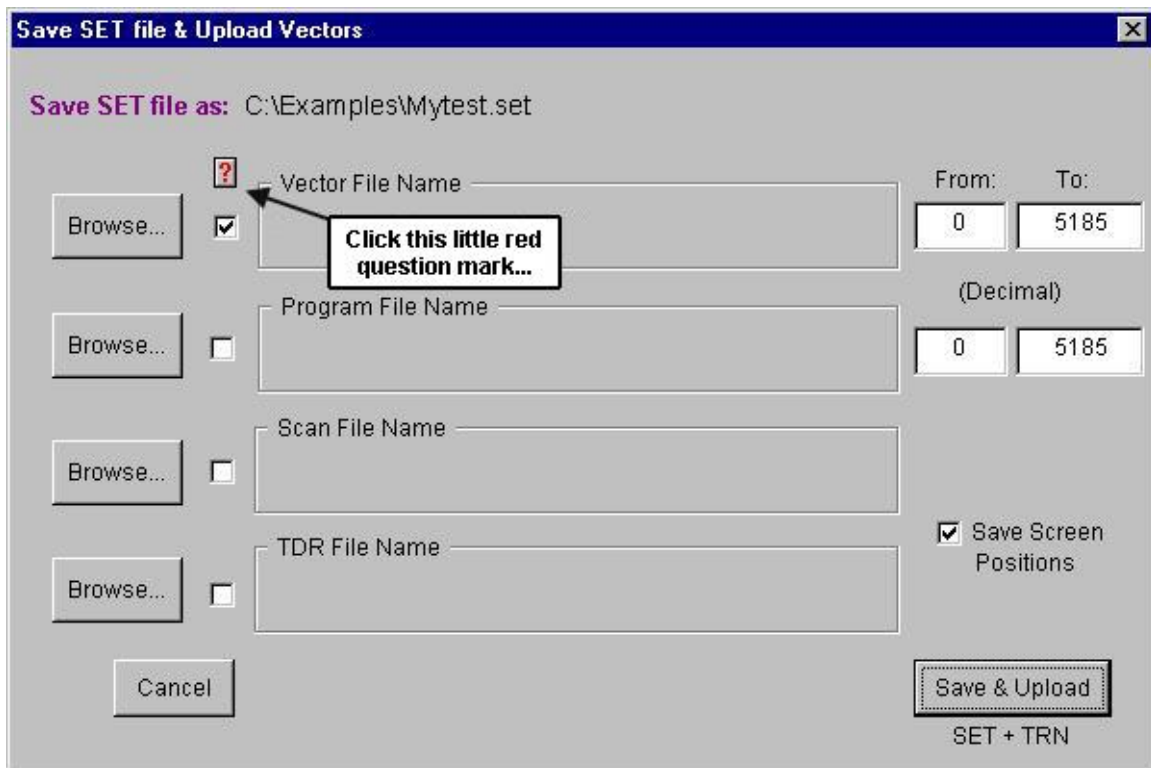
When you receive software updates, there will likely be new Special Scripts. To take advantage of these while retaining your previously enabled scripts, rename your old *SpScript.txt* file before loading the new software. Then you can enable the same scripts that were enabled in your old *SpScript.txt* file, by removing the leading semicolons in *SpScript.txt*.

To use the vector path feature that is the topic of this Q'nApp, you will enable one more script. Note in the "partial example" on page one that there is a keyword called:

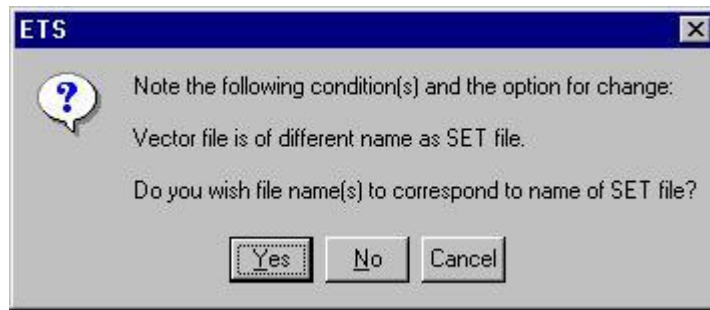
SaveVectorFileWithoutPathIfPathMatchesSetFilePath

Remove the semicolon from the front of this keyword and save this file as *SpScript.txt*. You can also access this keyword using the "View" drawer, under preferences.

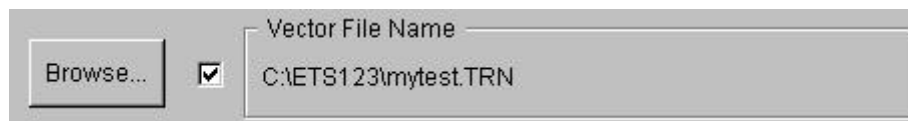
Now restart the Symphony software to enable the Special Script. This feature will save your vector file without a path as long as it matches the setfile name. To do this, save your setfile by clicking File and then "Save as...", and enter a new name for the setfile (It is required that your test system is on and connected at this point). Then the Vector Upload window appears:



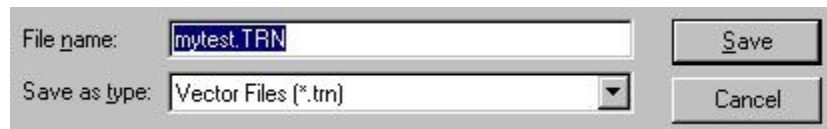
When you click the red question mark button, you will be asked this question:



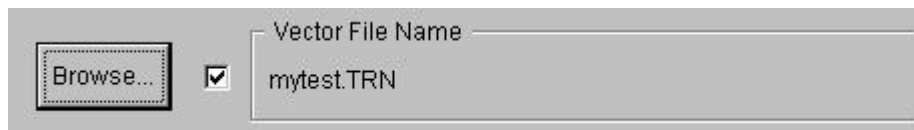
Answer “Yes” and you will return to the Vector Upload window. There you’ll see that your vector filename matches the setfile name... only the extensions are different. You’ll also notice that the current path is defined with the vector filename:



Click the “Browse...” button, normally used to define a filename and location for the vector file. In the Browse window, the vector name will already have been defined:



Simply click Save and you’ll return to the Vector Upload window. Only now the path is no longer indicated:



Just click “Save & Upload” at the bottom of the window and that completes the function. Any files saved this way will be transportable between folders. Use the same procedure if you have .PRG files.

See also:

- Q’nApp #S15 on Special Scripts
- Q’nApp #S16 on Symphony files
- Q’nApp #S19 on the Little Red Question Mark
- Q’nApp #S39 on PRG file attachment